

POWERED

BESTFLEX[®]

POWERED 1.9 ROLLER CONVEYOR

FEATURES

WIDTH: 18", 24", or 30"

Determined by package size, available conveying area and application specific needs

LENGTH EXTENDED: 12' and up

Calculate total length needed, including curvatures/obstructions

AXLE CENTER: 5", 4" or 3"

Package size determines necessary axle center length (fully extended)

ROLLER TYPE: 1.9" Ø steel roller

Determined by package weight, durability, operational flow control, and application specific needs

DESCRIPTION

With its innovative design, the **BestFlex[®] 1.9** powered roller conveyor requires less storage space when fully retracted and can service multiple docking doors for maximum productivity. By powering the conveyor, any package size can be moved any distance at variable rates of speed. It is an all-power conveyor that has a capacity of 100 pounds per linear foot.

The **BestFlex 1.9** model features an easy and quick way to change out the drive belts giving you added durability and less maintenance down time.

Flexible power conveyors provide maximum productivity in shipping, transportation and packaging applications where usability and adaptability are needed.



C O N V E Y O R S

A DURAVANT COMPANY





SPECIFICATIONS

18" WIDTHS		24" WIDTHS		30" WIDTHS		LENGTH ADJUSTMENT	
MODEL #	LEG SETS	MODEL #	LEG SETS	MODEL #	LEG SETS	EXTENDED	CONTRACTED
BFP1.91812	5	BFP1.92412	5	BFP1.93012	5	12'	5'
BFP1.91824	8	BFP1.92424	8	BFP1.93024	8	24'	10'
BFP1.91836	11	BFP1.92436	11	BFP1.93036	11	36'	15'
BFP1.91848	14	BFP1.92448	14	BFP1.3048	14	48'	20'

All conveyor products can be modified to suit specific design requirements.
Please contact our sales representatives for details on sizes or options that are not listed.

STANDARD FEATURES

- Load capacity 100 lbs/ft
- Heavy duty 16 gauge precision bearing 1.9" Ø steel rollers
- 5" axle centers
- 28½" – 37½" adjustable conveyor heights
- Heavy duty steel square tubing powder coated black legs
- 8" x 2" heavy duty casters with brakes
- 2" aluminum extruded side plates with bolted construction
- Self-tracking design
- Durable DC drive motors with 120VAC
- Variable speed 0-120 FPM
- Operator controls – start/stop
- On/off switches on both ends of conveyor
- Handles on each end of the unit

OPTIONS

- 4" and 3" axle centers
- Electronic photo eye package stop
- Zero pressure accumulation
- Indexing
- Connect brackets
- Electrical interface kit (allows multiple sections to operate together)

ACCESSORIES

- Herringbone transition
- Guide Track
- PowerTrack

TECHNICAL DATA

LEGS

- Powder coated, heavy duty leg supports
- 1½" square tubing welded cross brace

SIDE LINKS

- 2" aluminum alloy side links
- Bolted construction

WARRANTY

- Electrical: 12 month warranty
- Mechanical: 24 month warranty

SERVICES AVAILABLE

- Technical Support
- Installation and Service
- Maintenance
- Application Support
- Hardware Support

TELESCOPIC



MAXXREACH®

TELESCOPIC CONVEYOR

FEATURES

WIDTH: 18", 24", 30", or 36"

Width is determined by package size, available conveying area and application specific needs

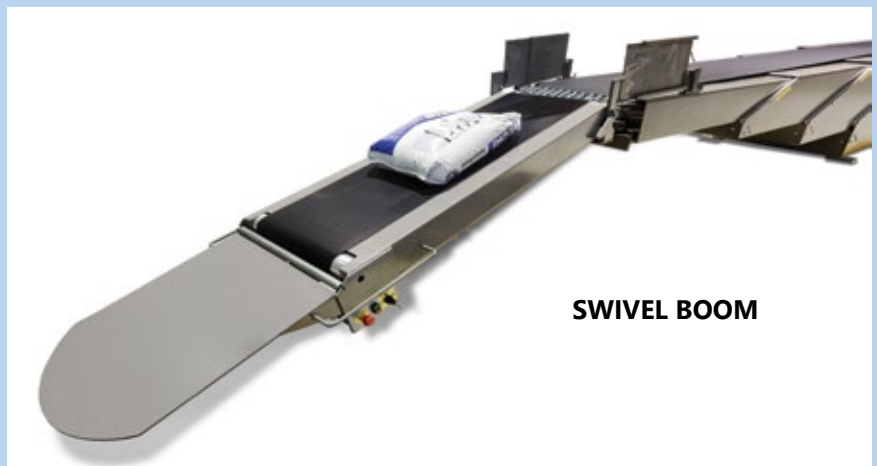
LENGTH EXTENDED: 14' - 95'

Length determined by specific application needs

DESCRIPTION

MaxxReach® telescopic conveyors provide the highest level of productivity for large volume, shipping and receiving applications for any type of distribution center. Automate your loading and unloading areas and convey a variety of products from large or small cartons to loose bags and tires.

All of our telescopic conveyors feature a VFD controlled belt drive system providing smooth transitions from belt starts and stops at speeds up to 120 FPM. They also include a VFD controlled extension drive providing smooth operation when extending and retracting the conveyor. With a variety of lengths, widths, options and accessories, **MaxxReach** conveyors will help achieve all of your material handling goals.



SWIVEL BOOM



C O N V E Y O R S

A DURAVANT COMPANY

SPECIFICATIONS

MODEL #	STANDARD LENGTH		OVERALL LENGTH
	CONTRACTED	EXTENDED	
MR2 14/34	14'	20'	34'
MR2 20/48	20'	28'	48'
MR3 18/54	18'	36'	54'
MR3 20/64	20'	40'	64'
MR3 23/74	23'	51'	74'
MR3 25/80	25'	55'	80'
MR3 28/88	28'	60'	88'
MR3 30/95	30'	65'	95'
MR4 16/58	16'	42'	58'
MR4 18/64	18'	46'	64'
MR4 22/74	22'	42'	74'
RL 20/16	20'	16'	20'
RL 25/20	25'	20'	25'
RL 30/24	30'	24'	30'
RL 40/32	40'	32'	40'

ACCESSORIES

- Herringbone Transition
- Man-rider platform
- Raised belt transfer
- Traverse system
- Direct or pole mounted fan
- Articulating snout
- Telescopic ventilation tubes
- Swivel boom
- Hydraulic tilt
- Auto-loader
- Fused electrical disconnect

All conveyor products can be modified to suit specific design requirements. Please contact our sales representatives for details on sizes or options that are not listed.

STANDARD FEATURES

- Load capacity 50 lbs/ft
- Maximum live load at any given time: 4000 lbs.
- 2-Ply PVC Belt
- 3HP belt drive
- 60FPM – 120FPM belt speeds
- 45 FPM extension speed
- 1HP gear motor for extension with friction clutch
- One piece formed side pressings
- Operator controls – In/Out, Start/Stop, E-stop, Lights, ESB, Debris Tray
- Belt & E-stop status & interlocks
- Emergency stops at control panels
- UHMW stage gap filler
- Extension stop bar on final stage
- Audible alarm

OPTIONS

- Variable belt speeds available with VFD controls
- Photo eye flow control
- Indexing
- Localized electrical system design with any standard voltage
- Transition rollers at site end of the conveyor

TECHNICAL DATA

CONSTRUCTION

All steel construction

WARRANTY

ELECTRICAL: 12 month warranty
MECHANICAL: 24 month warranty
STRUCTURAL: 60 month warranty

SERVICES AVAILABLE

- Technical Support
- Installation and Service
- Preventative & Routine Maintenance
- Application Support
- Operator & Maintenance Training



MAN RIDER WITH TRAVERSE



FMH Conveyors
 9701 E. Highland Drive
 Jonesboro, AR 72401

FMHConveyors.com
 1.800.327.9209

NESTAFLEX[®]



NestaFlex

Gravity 200 RLS Roller Conveyor

* Specifications of models available may vary from the model shown.

FEATURES

WIDTH: 18", 24" or 30"

Width is determined by package size, available conveying area and application specific needs

LENGTH EXTENDED: 8' - 60'

Determine total length needed, including curvatures and obstructions

AXLE CENTER: 5.25", 4" or 3"

Package size determines necessary axle center length on fully extended conveyor

ROLLER TYPE

Zinc plated 1 3/8" steel rollers

DESCRIPTION

Designed to expand, contract and move easily, the NestaFlex[®] Roller is a self tracking, gravity roller conveyor that has a per linear foot capacity of 200 pounds. The all steel construction provides unmatched structural integrity, whether the conveyor is extended, contracted or configured in simple or compound curves.

This unit is engineered to handle odd shaped cartons, drums, and pails in low to medium volume applications. It is the best choice for moving items without a flat, solid surface.



C O N V E Y O R S

A DURAVANT COMPANY



SPECIFICATIONS



18" Wide Models		24" Wide Models		30" Wide Models		Length Adjustments	
Model #	Leg Sets	Model #	Leg Sets	Model #	Leg Sets	Extended	Contracted
RLS18008S	3	RLS24008S	3	RLS30008S	3	8' 11"	2' 5"
RLS18012S	4	RLS24012S	4	RLS30012S	4	12' 10"	3' 5"
RLS18016S	5	RLS24016S	5	RLS30016S	5	16' 9"	4' 5"
RLS18020S	6	RLS24020S	6	RLS30020S	6	20' 9"	5' 6"
RLS18024S	7	RLS24024S	7	RLS30024S	7	24' 8"	6' 7"
RLS18028S	8	RLS24028S	8	RLS30028S	8	28' 5"	7' 8"
RLS18032S	9	RLS24032S	9	RLS30032S	9	32' 4"	8' 9"
RLS18036S	10	RLS24036S	10	RLS30036S	10	36' 3"	9' 9"
RLS18040S	11	RLS24040S	11	RLS30040S	11	40' 2"	10' 10"

All conveyor products can be modified to suit specific design requirements. Please contact our sales representatives for details on sizes or options that are not listed.

STANDARD FEATURES

- Load capacity 200 lbs/ft
- Zinc plated 1 3/8" steel rollers
- 5.25" axle centers
- 28" - 44" adjustable conveyor heights using hand knobs to raise or lower the legs
- Heavy duty steel square tubing zinc plated legs
- Welded horizontal leg brace
- Heavy duty 5" x 1 1/2" casters with 2 total lock brake casters on each end
- 7 gauge steel side links assembled using shoulder bolts and locking nuts
- 5/16" diameter axles across the width
- Self-tracking
- Couplers
- Heavy duty retractable package stop

OPTIONS

- 4" and 3" axle centers
- Additional brake casters
- Additional set of couplers
- Elevations for Adjustable legs
 - 20"-28"
 - 25"-38"
 - 36"-52"

ACCESSORIES

- Curve Guards

Technical Data

CONSTRUCTION

All steel bolted construction

LEGS

Zinc plated, heavy duty leg supports
1 1/8", square steel tubing with a welded cross member

SIDE LINKS

Made of 7 gauge steel

WARRANTY

18 month factory warranty

SERVICES AVAILABLE

- Technical Support
- Application Support
- Hardware Support

FMH Conveyors
410 Horizon Drive
Suwanee, GA 30024
www.fmhconveyors.com
1.800.669.1501



NESTAFLEX®

NestaFlex

Gravity 226 Skate Wheel Conveyor

* Specifications of models available may vary from the model shown.

FEATURES

WIDTH: 14", 18" or 24"

Determined by package size, available conveying area and application specific needs

LENGTH EXTENDED: 8' - 60'

Determine total length needed, including curvatures and obstructions

AXLE CENTER: 5.25", 4" or 3"

Package size determines necessary axle center length on fully extended conveyor

SKATE WHEEL TYPE: STEEL, BLACK, RED

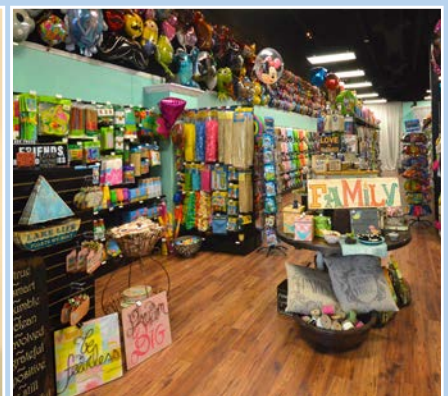
Determined by package weight, durability, operational flow control, and application specific needs

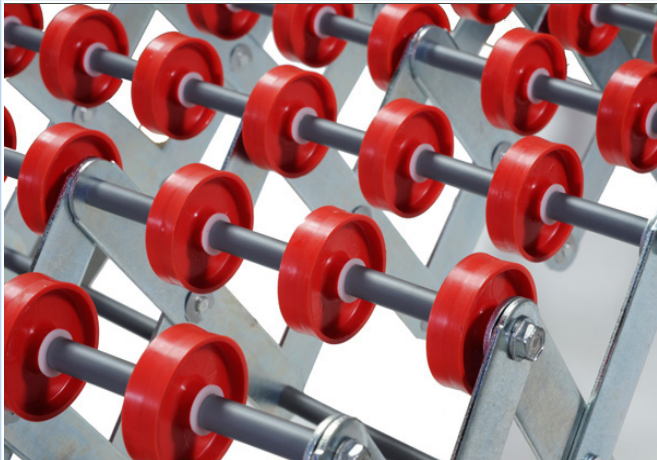
DESCRIPTION

Designed to expand, contract and move easily, the NestaFlex® 226 is a self tracking, gravity skate wheel conveyor that has a per linear foot capacity of 226 pounds. This unit is engineered to handle multi-sized cartons in low to medium volume applications.

The all-steel construction provides unmatched structural integrity, whether the conveyor is extended, compacted or configured in simple or compound curves. Adjustable inner legs vary height to achieve gravity flow.

The NestaFlex® 226 is the choice for use in retail store level applications, packaging areas, assembly lines and in low volume shipping and receiving departments.





14" Wide Models		18" Wide Models		24" Wide Models		Length Adjustments	
Model #	Leg Sets	Model #	Leg Sets	Model #	Leg Sets	Extended	Contracted
22614008	3	22618008	3	22624008	3	8' 11"	2' 4"
22614012	4	22618012	4	22624012	4	12' 10"	3' 3"
22614016	5	22618016	5	22624016	5	16' 9"	4' 3"
22614020	6	22618020	6	22624020	6	20' 9"	5' 2"
22614024	7	22618024	7	22624024	7	24' 8"	6' 2"
22614028	8	22618028	8	22624028	8	28' 7"	7' 1"
22614032	9	22618032	9	22624032	9	32' 6"	8' 1"
22614036	10	22618036	10	22624036	10	36' 6"	9' 0"
22614040	11	22618040	11	22624040	11	40' 5"	10' 0"
		22618044	12	22624044	12	44' 4"	10' 11"
		22618048	13	22624048	13	48' 3"	11' 11"
		22618052	14	22624052	14	52' 3"	12' 10"
		22618056	15	22624056	15	56' 2"	13' 10"
		22618060	16	22624060	16	60' 1"	14' 9"

6 skate wheels per axle

8 skate wheels per axle

8 skate wheels per axle

With standard 5.25" axle center

All conveyor products can be modified to suit specific design requirements. Please contact our sales representatives for details on sizes or options that are not listed.

STANDARD FEATURES

- Load capacity 226 lbs/ft
- Black poly skate wheels with steel ball bearings
- 5.25" axle centers
- 28" – 44" adjustable conveyor heights using hand knobs to raise or lower the legs
- Heavy duty steel square tubing zinc plated legs
- Welded horizontal leg brace
- Heavy duty 5" x 1 1/2" casters with 2 total lock brake casters on each end
- 11 gauge steel side links assembled using steel pin and retaining ring
- 5/16" diameter axle across the width
- Self-tracking design
- Couplers
- Heavy duty retractable package stop

OPTIONS

- 4" and 3" axle centers
- Additional brake casters
- Additional set of couplers
- Elevations for Adjustable legs
 - 20"-28"
 - 25"-38"
 - 36"-52"
- Steel skate wheels with steel ball bearings and Red poly skate wheels with nylon bushings

ACCESSORIES

- Curve Guards
- Swing Stick
- T-Junction

Technical Data

CONSTRUCTION

All steel construction

LEGS

Zinc plated, heavy duty leg supports
1 1/8", square steel tubing with a welded cross member

SIDE LINKS

Made of 11 gauge steel

WARRANTY

18 month factory warranty

SERVICES AVAILABLE

- Technical Support
- Application Support
- Hardware Support

FMH Conveyors LLC
410 Horizon Drive
Suwanee, GA 30024
www.fmhconveyors.com
1.800.669.1501



NESTAFLEX

NestaFlex

Gravity 376 AL/FL Skate Wheel Conveyor

* Specifications of models available may vary from the model shown.

FEATURES

WIDTH: 18", 24", or 30"

Determined by package size, available conveying area and application specific needs

LENGTH EXTENDED: 8' - 60'

Determine total length needed, including curvatures and obstructions

AXLE CENTER: 5.25", 4" or 3"

Package size determines necessary axle center length on fully extended conveyor

SKATE WHEEL TYPE: STEEL, BLACK, RED

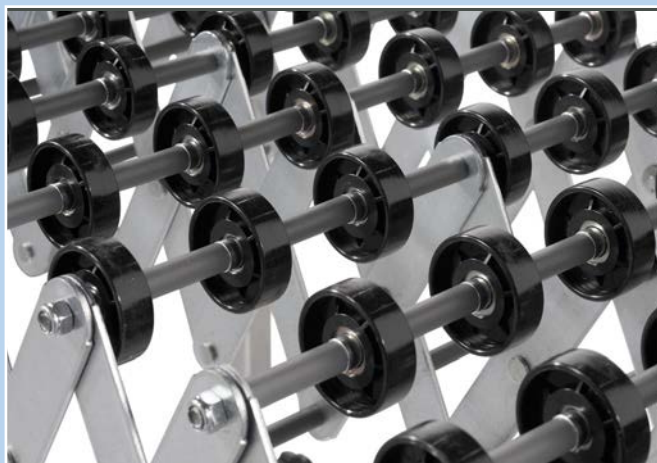
Determined by package weight, durability, operational flow control, and application specific needs

DESCRIPTION

The NestaFlex® 376 AL/FL is a heavy duty, gravity conveyor that features double welded cross braces and heavy duty square tubing legs available in adjustable height legs (AL) and fixed height legs (FL). This all bolted design uses shoulder bolts, steel lock nuts and is additionally secured with industrial thread lock to help reduce maintenance. The four point leg connection gives additional strength to the conveyor to make it last longer. The NestaFlex 376 is designed to provide the support necessary to handle heavy packages in high volume environments.

The NestaFlex® 376 AL/FL has a proven track record in the industry and is the choice for medium to high volume shipping and receiving departments in distribution centers, retail stores, and manufacturing and assembly operations.





18" Wide Models		24" Wide Models		30" Wide Models		Length Adjustments	
Model #	Leg Sets	Model #	Leg Sets	Model #	Leg Sets	Extended	Contracted
37618008	3	37624008	3	37630008	3	8' 6"	2' 7"
37618012	4	37624012	4	37630012	4	12' 2"	3' 7"
37618016	5	37624016	5	37630016	5	15' 10"	4' 8"
37618020	6	37624020	6	37630020	6	19' 6"	5' 8"
37618024	7	37624024	7	37630024	7	23' 2"	6' 8"
37618028	8	37624028	8	37630028	8	28' 0"	8' 2"
37618032	9	37624032	9	37630032	9	31' 8"	9' 2"
37618036	10	37624036	10	37630036	10	35' 4"	10' 3"
37618040	12	37624040	12	37630040	12	41' 10"	12' 1"
37618044	13	37624044	13	37630044	13	45' 6"	13' 1"
37618048	14	37624048	14	37630048	14	49' 5"	14' 4"
37618052	15	37624052	15	37630052	15	53' 1"	15' 4"
37618056	16	37624056	16	37630056	16	56' 9"	16' 5"
37618060	17	37624060	17	37630060	17	60' 5"	17' 5"

All conveyor products can be modified to suit specific design requirements. Please contact our sales representatives for details on sizes or options that are not listed.

STANDARD FEATURES

- Load capacity 376 lbs/ft
- Steel skate wheels with steel ball bearings
- 5.25" axle centers
- 28" – 36" adjustable conveyor heights (AL ONLY) using hand knobs to raise or lower the legs for 5" casters; 29" – 37" for 6" casters
- Fixed leg (FL ONLY) height adjustments determined per application and are preset by set screws or hand knob
- Heavy duty steel square tubing zinc plated legs
- Welded double horizontal leg braces
- Heavy duty 5" x 1 1/2" casters with 2 total lock brake casters on each end (all conveyors up to 40' in length); 6" x 2" (all conveyors over 40' in length)
- 5/16" diameter axle across the width
- Self-tracking design
- Couplers easily connect two or more conveyors
- Heavy duty retractable package stop

OPTIONS

- 4" and 3" axle centers
- Additional brake casters
- Additional set of couplers
- Additional leg height adjustments (AL ONLY):
 - 5" casters: 20"-26"; 24"-32"; 26"-44"; 44"-52"
 - 6" casters: 21"-27"; 25"-33"; 37"-45"; 45"-53"
- Black poly skate wheels with steel ball bearings and red poly skate wheels with nylon bushings
- Caster upgrades - 6" or 8"
- Outboard couplers
- 36" conveyor width

ACCESSORIES

- Curve Guards
- Swing Stick
- T-Junction
- Side Handles
- Heavy Duty Impact Cart

Technical Data

CONSTRUCTION

All steel bolted construction

LEGS

Zinc plated, heavy duty leg supports
1 1/4", square steel tubing with a
double welded cross brace

SIDE LINKS

Made of 7 gauge steel assembled
using shoulder bolts with Loctite and
steel locking nuts

WARRANTY

24 month factory warranty

SERVICES AVAILABLE

- Technical Support
- Installation and Setup
- Maintenance
- Application Support
- Hardware Support

FMH Conveyors LLC
410 Horizon Drive
Suwanee, GA 30024
www.fmhconveyors.com
1.800.669.1501