



# S-DE Series

# SCISSOR

## MOBILE ELEVATING WORK PLATFORMS

Comply with ANSI/SAIA standard



### Security and Intelligence

- Intelligent control system, real-time monitoring of equipment status;
- Multiple security protection to ensure personnel safety;
- Intelligent charging system to extend battery service life.

### Easy to Control

- Drivable at full height to improve working efficiency;
- The proportion drops and the descent moves smoothly;
- Two-way standard forklift hole, easy to load, unload and transport.

### Maintenance Friendly

- Self-lubricating sleeve, no lubrication required;
- Rotary tray on left and right sides, easy maintenance;
- Fault code indication to facilitate troubleshooting.

### Standard Features

- Standard longitudinal forklift sprocket hole
- Charging protection system
- Standard lateral forklift sprocket hole
- Adjustable extension platform
- Pothole inspection and protection system
- All motion alarm
- Emergency descent system
- Drop anti-clip function
- Side anti-collision function
- Auto brake system
- 220v power supply
- Emergency stop button
- Proportional control
- Flashing amber beacon
- Drivable at full height
- Folding guardrails
- Over tilt protective system

### Accessories & Options

- Platform working lights
- Maintenance-free battery
- Wireless remote control system
- Lithium battery
- Airline to platform

Las especificaciones y diseños están sujetos a cambios sin previo aviso. Las máquinas mostradas pueden incluir equipos estándar y opcionales.



#### QUERÉTARO

Autopista México - Querétaro Km 196.7,  
Col. La Piedra, Querétaro, Qro. C.P. 76150

#### CANCÚN

Bldv. Luis Donaldo Colosio Km 12.5 Int. 7  
Col. Alfredo V Bonfil Cancún, Quintana Roo. C.P. 77560

#### CDMX

Av. Gutemberg No. 192 Int. 3 Col. Anzures,  
Miguel Hidalgo, Ciudad de México. C.P. 11590

#### MÉRIDA

Calle 41 No. 361 / 12 y 14,  
Col. Melchor Ocampo, Mérida, Yuc. C.P. 97165

998 222 1013

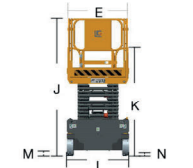
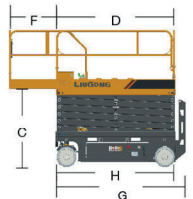
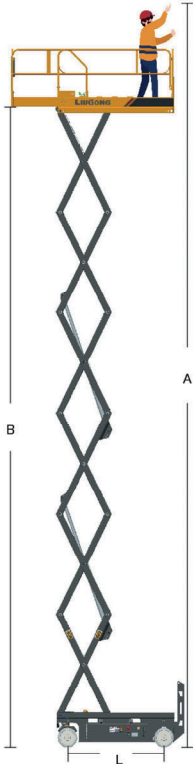
ventas@apruebaderoca.com

www.apruebaderoca.com

PRÓXIMAMENTE TUXTLA GUTIERREZ Y VERACRUZ



## Main Parameters



Item	Unit	S1230DEM	S1932DEM	S1930DE	S2632DE	S2646DE	S3246DE	S4046DE
<b>Size</b>								
A - Max.Work Height	ft	18	25	26	33	33	39	46
B - Max.Platform Height	ft	12	18	19	26	26	33	39
C - Min.Platform Height	ft	3	3.6	3	4	4	4	5
D - Platform Length	in	51.2	53.5	64.6	89.8	89.8	89.8	89.8
E - Platform Width	in	28.3	28.3	29.5	31.9	45.3	45.3	45.3
F - Max.Platform Extension Length	in	23.6	23.6	35.4	35.4	35.4	35.4	35.4
G - Overall Length	in	58	60	73	98	98	98	98
H - Overall Length(Without Ladder)	in	51.6	53.9	65.4	90.2	90.2	90.2	90.2
I - Overall Width	in	30	32	31	33	47	47	47
J - Overall Height (Rails Up)	in	78.3	86.6	84.6	93.3	93.3	98.4	103.5
K - Overall Height (Rails Down)	in	61.8	70.5	67.7	71.3	71.3	76.4	81.5
L - Wheelbase	in	42	44	52	74	74	74	74
M - Ground Clearance (Stowed)	in	2.4	2.4	2.4	3.9	3.9	3.9	3.9
N - Ground Clearance (Raised)	in	0.6	0.6	0.8	0.8	0.8	0.8	0.8
<b>Performance</b>								
Rated Load on Working Platform	lb	529	507	507	507	992	772	706
Safe Working Load on Extended Platform	lb	243	249	220	249	265	265	265
Max. Number of Workers	/	2	2	2	2	2	2	2
Drive Speed (Stowed)	mph	2.5	2.5	2.5	2.5	2.5	2.5	2.5
Drive Speed (Raised)	mph	0.4	0.4	0.4	0.4	0.4	0.4	0.4
Turning Radius (Inside)	in	0	0	0	0	0	0	0
Turning Radius (Outside)	in	59	59	63	87	91	91	91
Raising/Falling Time	s	23/21	30/25	25/20	38/42	38/42	55/52	60/55
Max.Gradeability	/	25%	25%	30%	25%	25%	25%	25%
Max. Working Slope (Lateral/Vertical)	°	X1.5°/Y3°	X1.5°/Y3°	X1.5°/Y3°	X1.5°/Y3°	X1.5°/Y3°	X1.5°/Y3°	X1.5°/Y3°
Tire size	in	9.1X3.1	9.1X3.1	14X4.5	15X5	15X5	15X5	15X5
<b>Power</b>								
Drive Motor	hp	0.54	0.74	1	2	2	2	2
Battery	/	95Ah	95Ah	215Ah	225Ah	225Ah	240Ah	300Ah
Charger	/	24V15A	24V15A	24V30A	24V30A	24V30A	24V30A	24V30A
<b>Weight</b>								
Total Weight	lb	1940	2910	3396	4850	5820	6570	6990



Design of Integrated Double Open Door



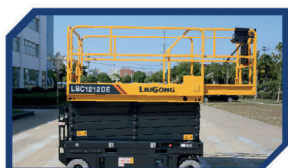
Emergency Descent Device



Acousto-optic Warning Lights



Steering System



Extended Platform



Safety Overhaul Bracket



Folding Guardrails



Max.Gradeability 30%