



**ACCEL**®

*Logística*

## ABOUT US:

We are a group of Mexican companies listed on the **BMV (Mexican Stock Exchange)** Since 1992, we have 95 years of experience, concerned about the needs of our business partners, to whom we offer **High-quality, state-of-the-art solutions through our two divisions:**

### LOGISTICS



### LOGISTICS:

- ACCEL LOGÍSTICA
- RECINTO FISCALIZADO
- WORLDWIDE LOGISTICS
- MAQUILADORA DE SERVICIOS

### FACTORY



### FACTORY:

- MOUNT FRANKLIN FOODS
- ELAMEX

# LOGISTICS Solutions

We offer a wide range of logistics solutions, in line with the needs of our business partners, **allowing us to increase effectiveness and efficiency in the supply chain.**

We have **infrastructure and technology** giving us flexibility and ideal operations management.

We strive to achieve the total satisfaction of our business partners who trust us with their operations.



**Our main objective is to BE YOUR STRATEGIC PARTNER.**

# As a logistics operator, we add value to your supply chain through comprehensive and customized solutions with:



# Competitive **ADVANTAGES**



## **INFRASTRUCTURE**

- Flexible that allows the handling of special temperatures.
- Adaptability to different cycles or temporalities.
- We turn your fixed costs into variable costs.



## **HUMAN CAPITAL**

- Highly trained and expert in his activities.



## **+190,000sq**

- For domestic and fiscal storage,
- Dry and Temperature Controlled.
- 17 CEDIS

# LOCATIONS



# CERTIFICATIONS



ISO 9001-2015

**PUBLIC BONDED WAREHOUSE  
OPERATION CERTIFICATE**



# LOGISTICS Solutions

**ACCEL**®

*Logística*

REFRIGERATED CHAMBERS



DISTRIBUTION



DISTRIBUTION CENTERS



BONDED STORAGE



IMMEX



COPACKING



WAREHOUSE ENABLING SERVICES



INTERNATIONAL LOGISTICS



BONDED WAREHOUSE



COMMERCIAL INFORMATION INSPECTION UNIT





# INVENTORY MANAGEMENT

With us you will always find an option, as we adapt to the needs of your products and operation, optimizing your processes and being the strategic ally you need to have benefits such as:

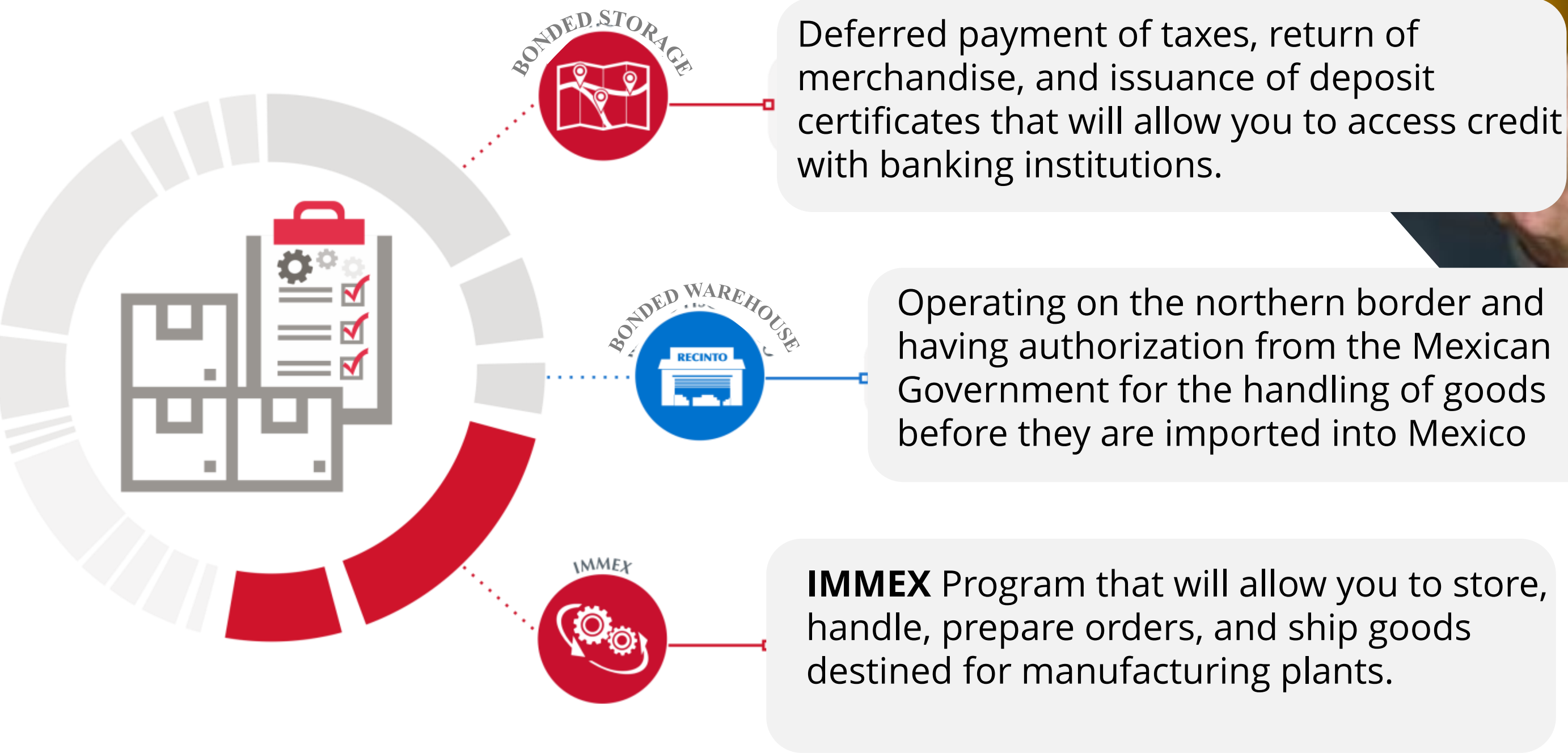
- ✓ Cost reduction, turning your fixed costs into variable ones.
- ✓ Reduction of investment.
- ✓ Unification of processes.
- ✓ Strategic Locations



we offer you more than 169,000m<sup>2</sup> of warehouse space in a dry environment and more than 21,000m<sup>2</sup> in temperature-controlled storage where different types of products are stored, of which we are responsible for **handling, management, control, and inventory accuracy**, which can be consulted online.



Our wide coverage allows you to **store** in strategic locations, thus extending the benefits such as:



# COLD STORAGE WAREHOUSE

With more than 21,000m<sup>2</sup> in controlled temperature in a refrigerated and frozen environment, with a flexible infrastructure that allows the handling of special temperatures, we guarantee the optimal conservation of perishable goods such as:

- Proteins of animal origin,
- Frozen foods,
- Raw materials,
- Wines,
- Seeds and all those products that require controlled temperatures to maintain their properties.

We offer you a flexible infrastructure that allows the management of special temperatures.



## We have:

Refrigerated chambers conditioned with advanced and safe technology.

National or Fiscal Warehouse.

TIF establishment for handling meat products..

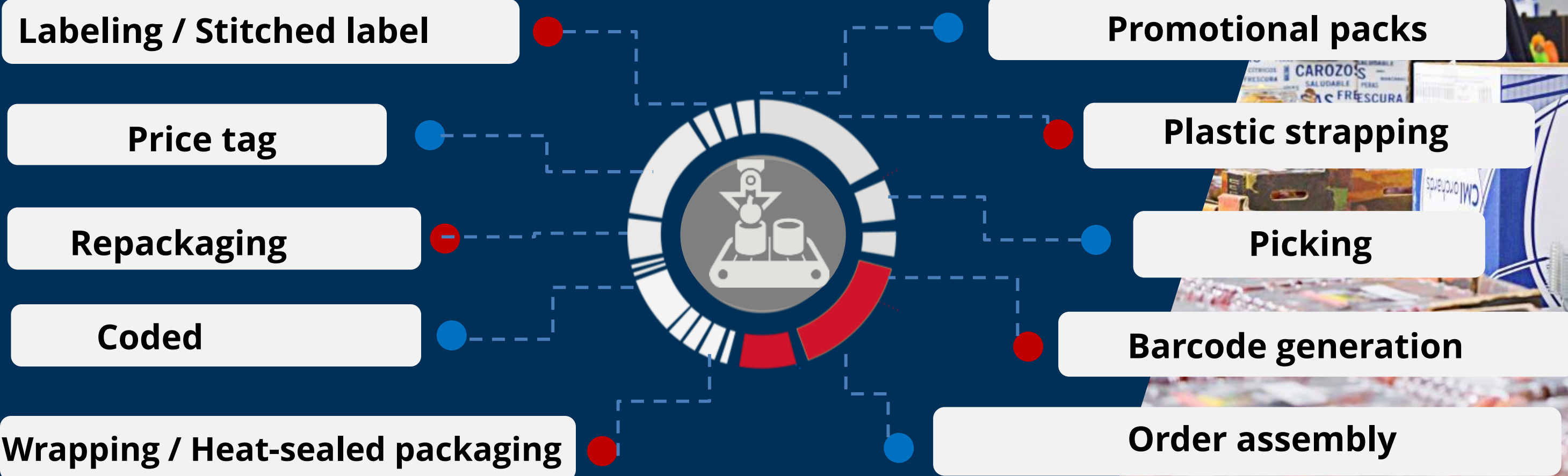
Temperature Leveling.

Machinery, Equipment and Facilities that allow flexibility to offer special temperatures.



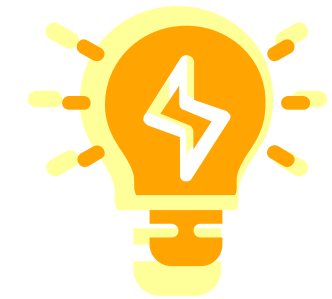
# COPACKING

In search of the satisfaction of our business partners, we design logistics solutions that generate **added value** to their supply chain, offering a wide range of solutions in **light manufacturing** such as:



In order for your products to be marketed in the national territory under compliance with the **Official Mexican Standards (NOM)**, We help you with procedures such as:

# COMMERCIAL INFORMATION INSPECTION UNIT **UVNOM009**



we cover the 10 most requested NOM's



- Label evaluation.
- Certificates of conformity.
- Compliance reports.



- Label design and printing.
- Avoid immobilization and/or fines by technical evaluation of labels.



We are accredited for various industries such as textile, electronics, food and beverages, automotive, toys, leather and skins, pre-packaged cosmetics, and general product labeling.

# NATIONAL Transport and Distribution

We offer solutions that adapt to the needs of the supply chain, ensuring safe and optimal transportation of your goods while meeting special requirements, **through the management, administration, and coordination of a wide and reliable fleet for Full Truck Load (FTL) transportation of complete loads and consolidating Less Truck Load (LTL) orders,** while respecting the specific requirements of each shipment to make deliveries efficiently.







“Milk Run” routes

Platform crossing

Portage

Dedicated circuits

Oversize

Controlled temperatures

## Offering:

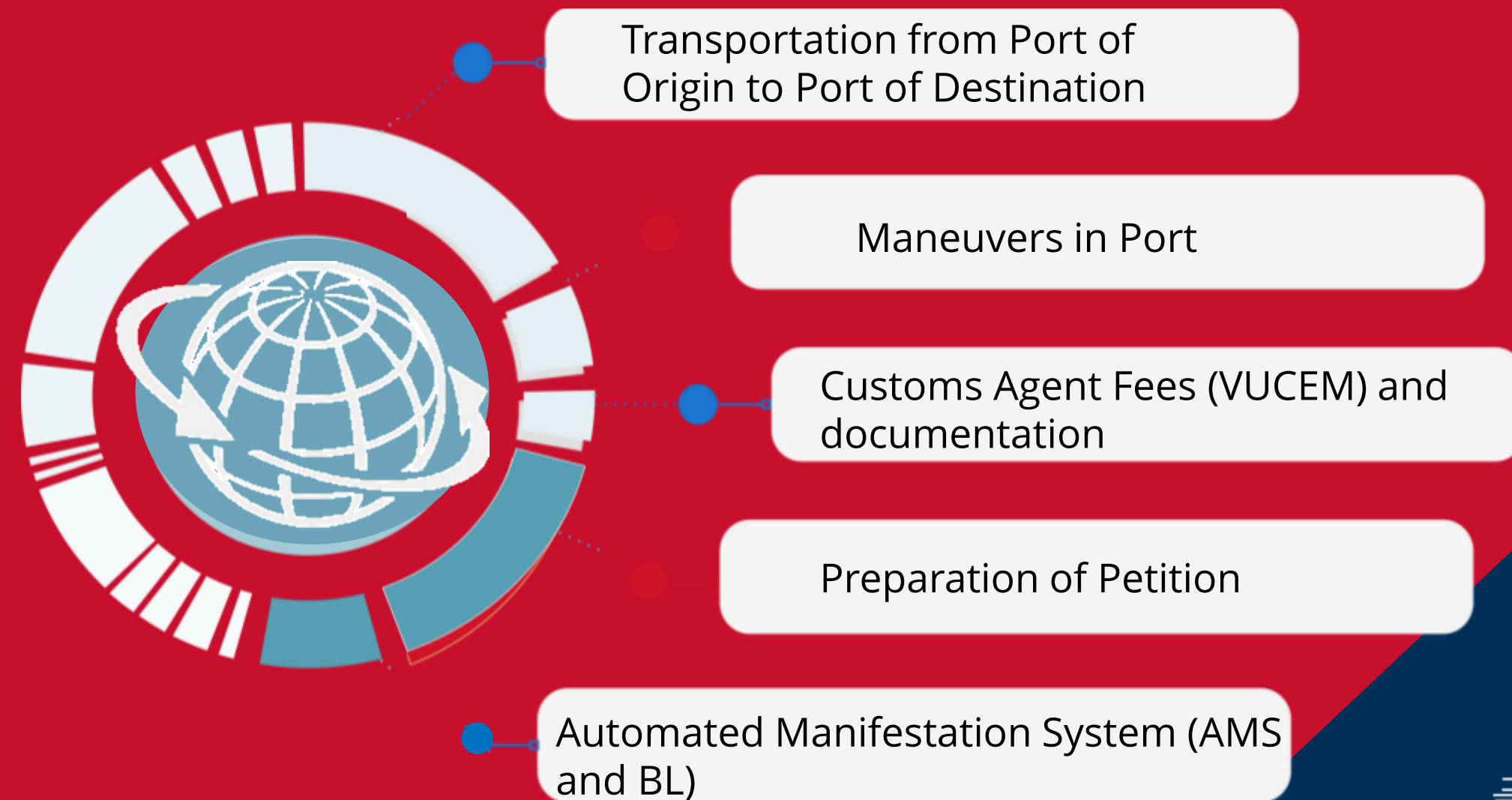
- Compliance with delivery windows
- Cargo visibility
- Operational KPI report
- Design of special routes
- Delivery evidence
- Inventoried delivery
- Coexistence of merchandise



# International Logistics

We offer you solutions that integrate your logistic chain, customized, developed by experts through risk analysis models, taking care of each operation and the supply chain process from origin to destination, offering security and confidence while your goods are imported and exported.

Our solutions include **maritime, air and land services.**



# Warehouse **ENABLING SERVICES**



With our warehouse fitting-out solution, we can make a client-owned **warehouse, cold room, yard or silo** operate as a General Warehouse, extending the benefits that this entails.

Obtaining financing with certificates of deposit and pledge bonds.

Support for the commercialization of grains, guaranteeing the existence of the product to third parties.

Verification of stocks for the collection of support for the marketing of grains.

Different modalities of the Bonded Warehouse at the client's facilities.

## ADVANTAGES

A blue gear-shaped icon with a grid pattern and a white arrow pointing clockwise, containing the word 'ADVANTAGES' in white capital letters.

**Can be carried out throughout the national territory.**

# WAREHOUSE ENABLING SERVICES



Other specific benefits include:

## Benefits for the Accredited

- Immediate liquidity with credit titles.
- Short-term credits.
- Fixed assets are not committed.
- Guarantee of stocks to third parties.
- Diversification of Credit Lines.

## Benefits for the Financial Institution

- Garment Control
- Custody of the merchandise
- Ease of Inspection
- Merchandise insurance
- Recovers the credit as the customer disposes of the merchandise

Can be carried out throughout the national territory.

# CONTACT US

[ventas@accel.com.mx](mailto:ventas@accel.com.mx)

55 5705 2788



[www.accellogistica.com.mx](http://www.accellogistica.com.mx)