

# LA16JE

## Articulating Boom Lifts-Electric

### Safe and Reliable

- Standard dual channel sensor, safe and reliable;
- Electric emergency power systems provide more security;
- The protection level of components of the whole machine is above IP65, the protection level is high.

### Intelligent and efficient

- Composite action, intelligent and efficient;
- Electronic differential combined with suspending axle technology for better trafficability;
- Compact structure, zero tail pendulum, suitable for working in narrow spaces;
- Hybrid drive, with a climbing ability of up to 40% and strong passability;
- High-power charger, large-capacity power battery, fast charging, ultra-long endurance.

### Energy saving and comfort

- Self-weight decrease through the booms, energy saving and stable;
- Automatic deceleration at the action limit position, stable action, small shaking;
- Optimize the electric control algorithm with the load sensitive hydraulic system to achieve accurate power output.

### Green and environmental protection

- Pure electric power, low use and maintenance cost, high return on investment;
- Green and environmental protection, no emission, low noise, meet indoor and outdoor working conditions.

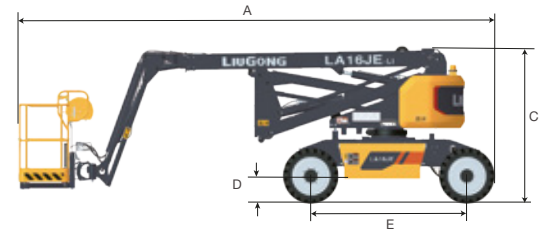
### Standard configuration

- |   |                                    |
|---|------------------------------------|
| ·Platform work lights                   | ·Electric emergency descent system |
| ·Working strobe lamp                    | ·Manual emergency descent system   |
| ·Load Sensing System                    | ·Emergency stop system             |
| ·Electro hydraulic proportional control | ·Anti crash device                 |
| ·Automatic brake system                 | ·Remote fault diagnosis system     |
| ·Tilt protection system                 | ·overload protection               |
| ·Telematics-BOX                         | ·Full action warning               |

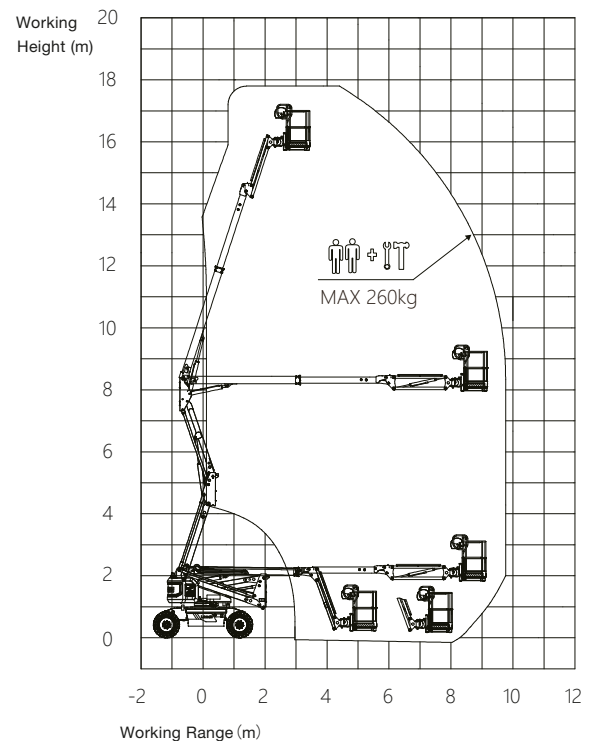


## Main Parameters

Item	Unit	LA16JE
<b>Size</b>		
Max.Working Height	m	17.8
Max.Platform Height	m	15.8
Max.Operating Range	m	9.78
A-Overall Length(Stowed)	m	7.2
B-Overall Width(Stowed)	m	2.3
C-Overall Height(Stowed)	m	2.37
Overall Length(Transport)	m	7.2
Overall Width(Transport)	m	2.3
Overall Height(Transport)	m	2.37
Platform Size(L×W×H)	m	1.83×0.76×1.1
Turntable Tailswing	m	0
D-Ground clearance	m	0.25
E-Wheelbase	m	2.36
Turning Radius(Inside/Outside)	m	2.06/4.78
Tyres	/	33×12-20 (Solid off-road tyre)
Maximum crossing height	m	8.16
<b>Performance</b>		
Platform Load(Unrestricted)	kg	260
Max.Occupants	/	2
Gradeability	/	40%
Travel Speed(Stowed)	km/h	4.8
Travel Speed(Raised)	km/h	1
Max.Working Slope	/	X-5°/Y-5°
Turret Rotation	/	360°Discontinuous
Platform Rotation	/	±90°
Jib Movement	/	-70°~+72°
Drive Steering Type	/	4WD×2WS
<b>Weight</b>		
Overall Weight	kg	7300
<b>Power</b>		
Battery (Lithium)	/	51.2V/304Ah
Charger	/	48V/60A
Driving Motor	/	24V/3.3kW
Lifting Motor	/	24V/10kW
Hydraulic Tank	L	65



LA16JE Performance Curve



Las especificaciones y diseños están sujetos a cambios sin previo aviso. Las máquinas mostradas pueden incluir equipos estándar y opcionales.



**QUERÉTARO**  
Autopista México - Querétaro Km 196.7,  
Col. La Piedra, Querétaro, Qro. C.P. 76150

**CDMX**  
Av. Gutemberg No. 192 Int. 3 Col. Anzures,  
Miguel Hidalgo, Ciudad de México. C.P. 11590

**CANCÚN**  
Blvd. Luis Donaldo Colosio Km 12.5 Int. 7  
Col. Alfredo V Bonfil Cancún, Quintana Roo. C.P. 77560

**MÉRIDA**  
Calle 41 No. 361 / 12 y 14,  
Col. Melchor Ocampo, Mérida, Yuc. C.P. 97165

**PRÓXIMAMENTE**  
TUXTLA GUTIERREZ  
Y VERACRUZ

**998 222 1013**  
ventas@apruebaderoca.com  
www.apruebaderoca.com