



**TOUGH WORLD. TOUGH EQUIPMENT.**

**Guangxi LiuGong Machinery Co.,Ltd.  
No. 1 Liutai Road, Liuzhou, Guangxi.  
545007**

**PR China**

**T: +86 0772 3886124**

**E: [overseas@liugong.com](mailto:overseas@liugong.com)**

**HQ: [www.liugong.com](http://www.liugong.com)**

**MH: [www.lgforklift.cn](http://www.lgforklift.cn)**

Like and follow us:



**LIUGONG 082022-ENG**

The LiuGong series of logos herein, including but not limited to word marks, device marks, letter of alphabet marks and combination marks, as the registered trademarks of Guangxi LiuGong Group Co., Ltd. are used by Guangxi LiuGong Machinery Co., Ltd. with legal permission, and shall not be used without permission. Specifications and designs are subject to change without notice. Illustrations and pictures may include optional equipment and may not include all standard equipment. Equipment and options varies by regional availability.

# CPCD15-35

LPG&GAS FORKLIFT



TOUGH WORLD. TOUGH EQUIPMENT.

# MAXIMIZE YOUR RETURN ON INVESTMENT

LiuGong's **customer-driven** design and **quality-focused** engineering creates lasting value that will deliver to your bottom line.

---

## DEPENDABLE POWER

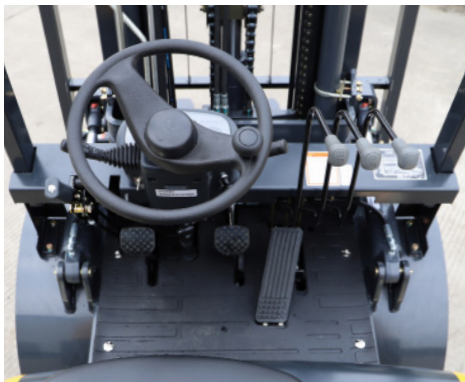
Unmatched performance driven by the World-Class Engine.



---

## ERGONOMIC

Widen operating space and reasonable design can give the operator better experience.



---

## COMFORTABLE

The full hydraulic steering system allows for smooth steering in an ergonomic seating posture, hence improved operator's comfort.



---

## HIGH EFFICIENCY

Newly optimized hydraulic system provides excellent lifting speed, assisting you to finish work efficiently and safely.

---

## GOOD VIEW

The mast and overhead guard are designed for wider view, as well as operator's comfort and safety.



---

## MAINTAINING

The engine hood with big angle for easy to maintain.



---

## PARTS

Using genuine LiuGong parts is key to keeping your costs low and your machine in top working order. Our extensive support network is always there when you need it, to maximize your business profitability.

---

## AFTER SALES SERVICE

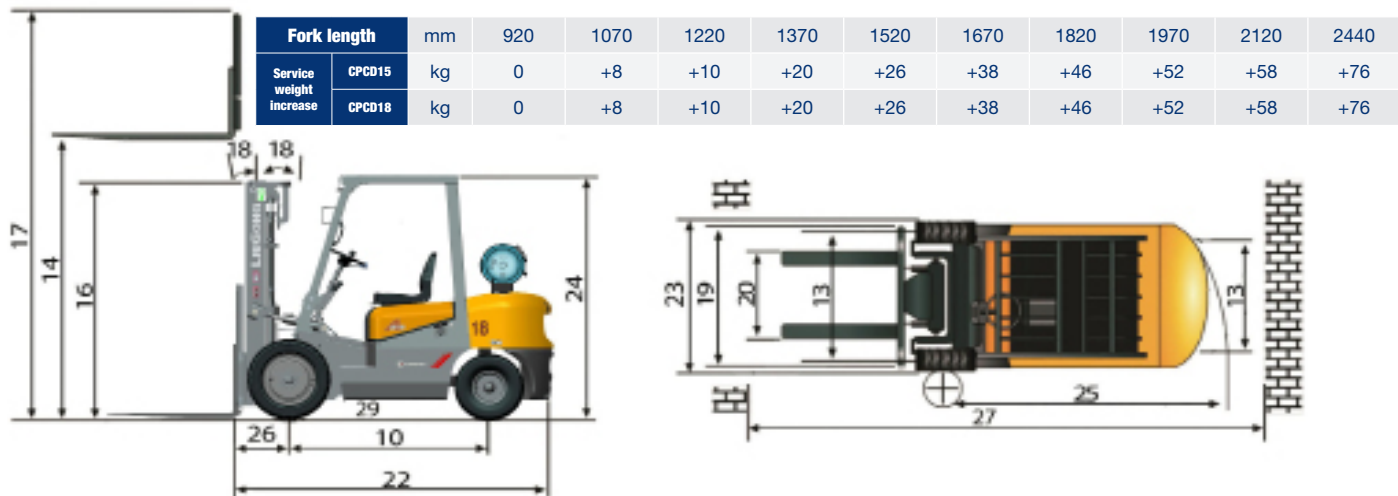
As a customer of LiuGong you can feel confident that our dealers and regional offices will be there to support you with training, service and maintenance needed throughout the life of your machine.



# SPECIFICATION

<b>General</b>	<b>Model</b>	1			CPCD15	CPCD18
	<b>Power Type</b>	2			GAS / LPG	GAS/LPG
	<b>Base Capacity</b>	3	@rated load center	kg	1,500	1,800
	<b>Load Center</b>	4		mm	500	500
<b>Weights</b>	<b>Service Weight</b>	5	unloaded	kg	2,800 [1]	3,000 [1]
	<b>Axle Load</b>	6	loaded / unloaded, front	kg	3,768 / 1,068	4,200 / 1,027
		7	loaded / unloaded, rear	kg	532 / 1,732	600 / 1,973
<b>Tires</b>	<b>Tire Type</b>	8			Pneumatic	Pneumatic
	<b>Wheels</b>	9	front / rear		2 / 2	2 / 2
	<b>Wheelbase</b>	10		mm	1,430	1,430
	<b>Tire Size</b>	11	front		6.50-10-10PR	6.50-10-10PR
		12	rear		5.00-8-8PR	5.00-8-8PR
13	front / rear			890 / 910	890 / 910	
<b>Mast</b>	<b>Max. Fork Height</b>	14	with std 2-stage mast	mm	3,000	3,000
	<b>Free lift</b>	15	with std 2-stage mast	mm	130	130
	<b>Height, Upright Lowered</b>	16	with std 2-stage mast	mm	2,040	2,040
	<b>Height, Upright Extended</b>	17	with std 2-stage mast	mm	4,030	4,030
	<b>Mast Tilt, Fwd/Back</b>	18	with std 2-stage mast	deg	6° / 12°	6° / 12°
	<b>Carriage</b>	19	width	mm	970	970
	<b>Fork Spread</b>	20	minimum / maximum	mm	202 / 970	202 / 970
	<b>Fork Dimensions</b>	21	T x W x L	mm	35x 100 x 920	35x 100 x 920
<b>Chassis</b>	<b>Length to Fork Face</b>	22	with std 2-stage mast	mm	2,330	2,370
	<b>Overall Width</b>	23		mm	1,080	1,080
	<b>Overhead Guard Height</b>	24		mm	2,070	2,070
	<b>Turning Radius</b>	25	minimum outside	mm	1,950	1,990
	<b>Fork Overhang</b>	26	with std 2-stage mast	mm	433	433
	<b>Right Angle Stack</b>	27	add load length and clearance	mm	3,490	3,550
	<b>Ground Clearance</b>	28	minimum loaded	mm	80	80
		29	center of wheelbase	mm	120	120
30			mm	2,070	2,070	
<b>Performance</b>	<b>Travel Speed</b>	30	loaded / unloaded	km/h	15 / 15	15 / 15
	<b>Lift Speed</b>	31	loaded / unloaded	m/s	0.50 / 0.52	0.50 / 0.52
	<b>Lower Speed</b>	32	loaded / unloaded	m/s	0.50 / 0.45	0.50 / 0.45
	<b>Max. Drawbar Pull</b>	33	loaded	kg	1,800	1,800
	<b>Max. Gradeability</b>	34	loaded / unloaded	%	20 / 20	20 / 20
<b>Systems</b>	<b>Brakes</b>	35	service		Foot / Hyd	Foot / Hyd
		36	parking		Hand / Mech	Hand / Mech
		37	manufacturer		Nissan	Nissan
	<b>Engine</b>	38	model		K21	K21
		39	emission compliance		N/A	N/A
		40	cylinders		4	4
		41	displacement	liters	2	2.07
		42	rated power	kW/rpm	31.2 / 2,250	31.2 / 2,250
		43	Max. torque	N · m/rpm	142.7 / 1,600	142.7 / 1,600

Note: [1] service weight increases by 70kg after configured with solid tires and increases as following list by fork length increase.

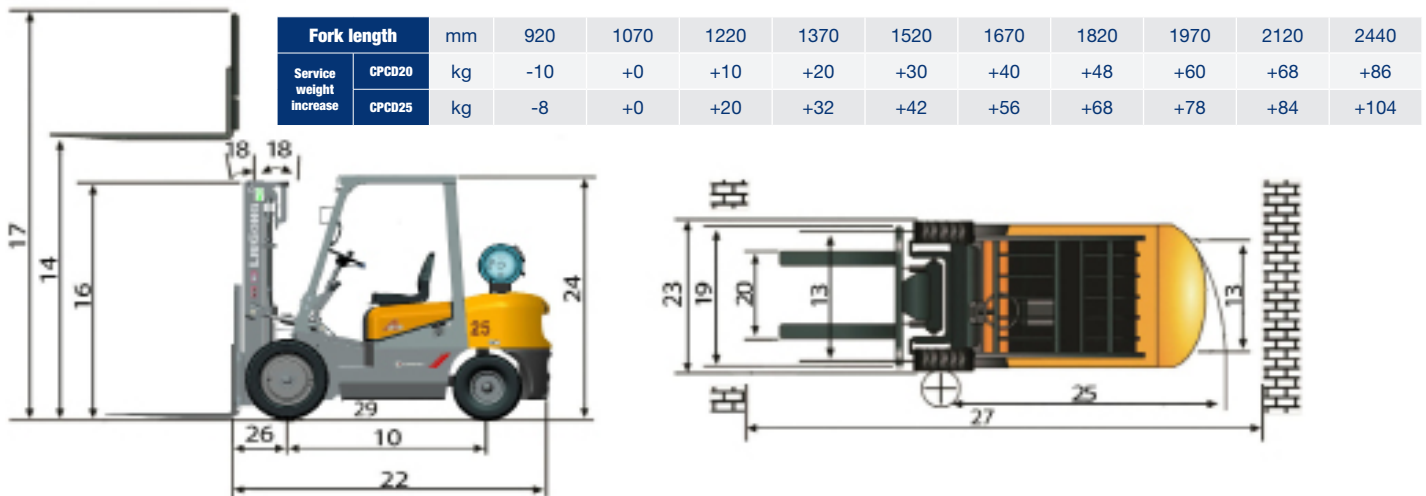




# SPECIFICATION

General	Model	1			CPCD20	CPCD25	
	Power Type	2			GAS / LPG	GAS / LPG	
	Base Capacity	3	@rated load center	kg	2,000	2,500	
	Load Center	4		mm	500	500	
Weights	Service Weight	5	unloaded	kg	3,295 [2]	3,495 [2]	
	Axle Load	6	loaded / unloaded, front	kg	4,662 / 1,454	5,320 / 1,482	
		7	loaded / unloaded, rear	kg	637 / 1,841	675 / 2,113	
Tires	Tire Type	8			Pneumatic	Pneumatic	
	Wheels	9	front / rear		2 / 2	2 / 2	
	Wheelbase	10		mm	1,650	1,650	
	Tire Size	11	front		7.00-12-12PR	7.00-12-12PR	
		12	rear		6.00-9-10PR	6.00-9-10PR	
Tread Width	13	front / rear		970 / 980	970 / 980		
Mast	Max. Fork Height	14	with std 2-stage mast	mm	3,000	3,000	
	Free lift	15	with std 2-stage mast	mm	145	145	
	Height, Upright Lowered	16	with std 2-stage mast	mm	2,070	2,070	
	Height, Upright Extended	17	with std 2-stage mast	mm	4,025	4,025	
	Mast Tilt, Fwd/Back	18	with std 2-stage mast	deg	6° / 12°	6° / 12°	
	Carriage	19	width	mm	1,040	1,040	
	Fork Spread	20	minimum / maximum	mm	222 / 1,010	222 / 1,010	
	Fork Dimensions	21	T x W x L	mm	45 x 100 x 1,070	45 x 100 x 1,070	
Chassis	Length to Fork Face	22	with std 2-stage mast	mm	2,550	2,630	
	Overall Width	23		mm	1,150	1,150	
	Overhead Guard Height	24		mm	2,100	2,100	
	Turning Radius	25	minimum outside	mm	2,190	2,190	
	Fork Overhang	26	with std 2-stage mast	mm	458	458	
	Right Angle Stack	27	add load length and clearance	mm	3,900	3,950	
	Ground Clearance	28	minimum loaded	mm	120	120	
		29	center of wheelbase	mm	140	140	
Performance	Travel Speed	30	loaded / unloaded	km/h	19 / 20	19 / 20	
	Lift Speed	31	loaded / unloaded	m/s	0.46 / 0.50	0.53 / 0.55	
	Lower Speed	32	loaded / unloaded	m/s	0.55 / 0.40	0.42 / 0.51	
	Max. Drawbar Pull	33	loaded	kg	1,600	1,680	
	Max. Gradeability	34	loaded / unloaded	%	18 / 20	18 / 20	
Systems	Brakes	35	service		Foot / Hyd	Foot / Hyd	
		36	parking		Hand / Mech	Hand / Mech	
		37	manufacturer		Nissan	Xinchai	
	Engine	38	model			K25	4D27LPG
		39	emission compliance			N/A	Not certified
		40	cylinders			4	4
		41	displacement	liters		2.49	2.67
		42	rated power	kW/rpm		37.4 / 2,300	41/2,500
		43	Max. torque	N · m/rpm		176.5 / 1,600	175/15,00-1,800

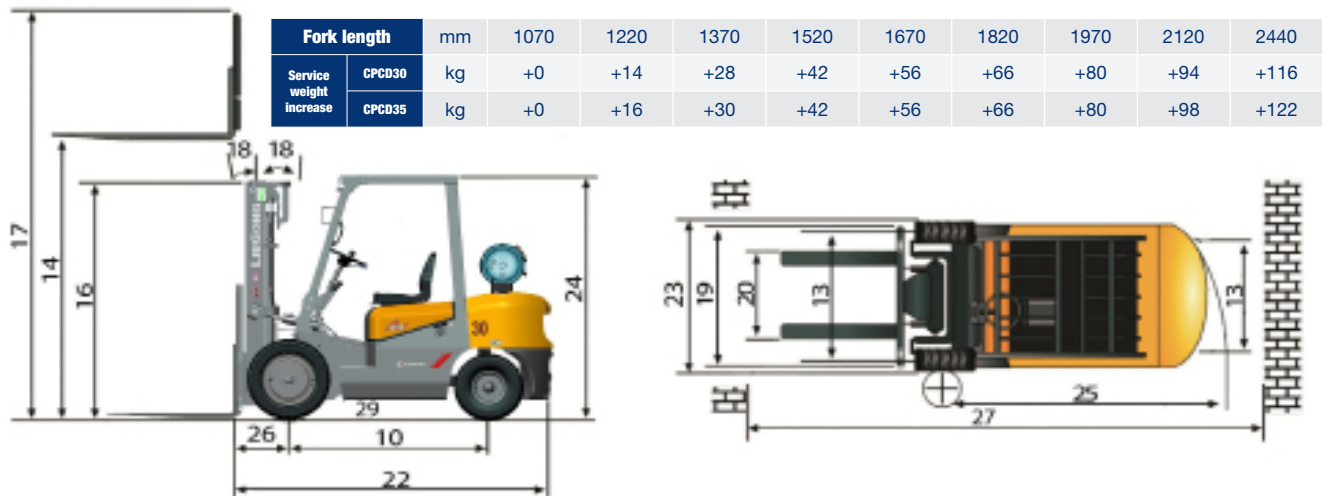
Note: [2] service weight increases by 86kg after configured with solid tires and increases as following list by fork length increase.



# SPECIFICATION

<b>General</b>	<b>Model</b>	1				CPCD30	CPCD35		
	<b>Power Type</b>	2				Gas / LPG	Gas / LPG		
	<b>Base Capacity</b>	3	@rated load center	kg		3,000	3,500		
	<b>Load Center</b>	4		mm		500	500		
<b>Weights</b>	<b>Service Weight</b>	5	unloaded	kg		4,170 [3]	4,370 [3]		
	<b>Axle Load</b>	6	loaded / unloaded, front	kg		6,370 / 1,620	7,050 / 1,570		
		7	loaded / unloaded, rear	kg		800 / 2,550	820 / 2,800		
<b>Tires</b>	<b>Tire Type</b>	8				Pneumatic	Pneumatic		
	<b>Wheels</b>	9	front / rear			2 / 2	2 / 2		
	<b>Wheelbase</b>	10		mm		1,700	1,700		
	<b>Tire Size</b>	11	front				28x9-15-14PR	28x9-15-14PR	
		12	rear				6.50-10-10PR	6.50-10-10PR	
13	Tread Width	front / rear				1,000 / 980	1,000 / 980		
<b>Mast</b>	<b>Max. Fork Height</b>	14	with std 2-stage mast	mm		3,000	3,000		
	<b>Free lift</b>	15	with std 2-stage mast	mm		145	145		
	<b>Height, Upright Lowered</b>	16	with std 2-stage mast	mm		2,080	2,080		
	<b>Height, Upright Extended</b>	17	with std 2-stage mast	mm		4,146	4,146		
	<b>Mast Tilt, Fwd/Back</b>	18	with std 2-stage mast	deg		6° / 12°	6° / 12°		
	<b>Carriage</b>	19	width	mm		1,100	1,100		
	<b>Fork Spread</b>	20	minimum / maximum	mm		272 / 1,072	272 / 1,072		
<b>Fork Dimensions</b>	21	T x W x L	mm		45 x 122 x 1,070	50 x 122 x 1,070			
<b>Chassis</b>	<b>Length to Fork Face</b>	22	with std 2-stage mast	mm		2,705	2,743		
	<b>Overall Width</b>	23		mm		1,225	1,225		
	<b>Overhead Guard Height</b>	24		mm		2,170	2,170		
	<b>Turning Radius</b>	25	minimum outside	mm		2,400	2,435		
	<b>Fork Overhang</b>	26	with std 2-stage mast	mm		471	476		
	<b>Right Angle Stack</b>	27	add load length and clearance	mm		4,141	4,176		
	<b>Ground Clearance</b>	28	minimum loaded	mm		135	135		
		29	center of wheelbase	mm		140	140		
<b>Performance</b>	<b>Travel Speed</b>	30	loaded / unloaded	km/h	18.5 / 19	18.5 / 19	18.5 / 19	18 / 19	
	<b>Lift Speed</b>	31	loaded / unloaded	m/s	0.43 / 0.45	0.455 / 0.475	0.43 / 0.45	0.455 / 0.475	
	<b>Lower Speed</b>	32	loaded / unloaded	m/s	0.46 / 0.40	0.46 / 0.48	0.46 / 0.40	0.44 / 0.46	
	<b>Max. Drawbar Pull</b>	33	loaded	kg		2,000	1,680	2,000	1,640
	<b>Max. Gradeability</b>	34	loaded / unloaded	%		20 / 20	18 / 20	20 / 20	15 / 20
<b>Systems</b>	<b>Brakes</b>	35	service		Foot / Hyd	Foot / Hyd	Foot / Hyd	Foot / Hyd	
		36	parking		Hand / Mech	Hand / Mech	Hand / Mech	Hand / Mech	
	<b>Engine</b>	37	manufacturer			Nissan	Xinchai	Nissan	Xinchai
		38	model			K25	4D27LPG	K25	4D27LPG
		39	emission compliance			N/A	Not certified	N/A	Not certified
		40	cylinders			4	4	4	4
		41	displacement	liters		2.49	2.67	2.49	2.67
		42	rated power	kW/rpm		37.4 / 2,300	41/2,500	37.4 / 2,300	41/2,500
		43	Max. torque	N · m/rpm		176.5 / 1,600	175/15,00-1,800	176.5 / 1,600	175/15,00-1,800

Note: [3] service weight increases by 114kg after configured with solid tires and increases as following list by fork length increase.

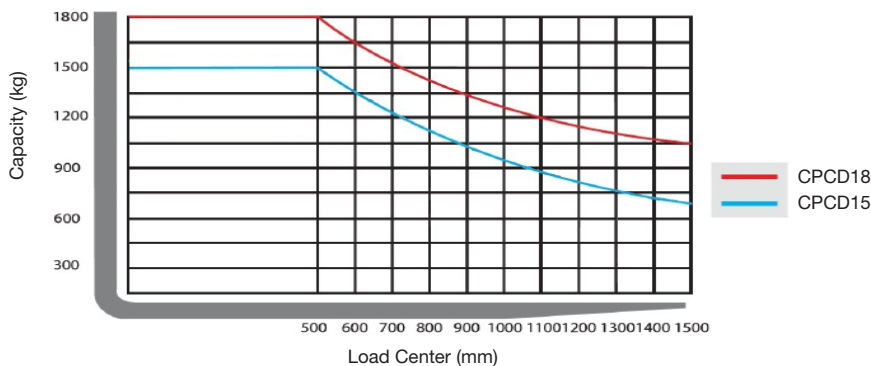


# CAPACITY

Mast type	Maximum Fork Height (MFH)	Mast Overall Lowered Height (OAL)	Freee Lift with Load Backrest	Mast Tilt Angle (F/B)	Rated Load Capacity				Total Weight with Standard Forks	
					With Standard Forks		With Sideshifter			
					CPCD15	CPCD18	CPCD15	CPCD18	CPCD15	CPCD18
	mm	mm	mm	degree	kg @ (500mm LC)		kg @ (500mm LC)		Kg	
Standard 2-Stage	3000	2030	135	6 / 12	1500	1800	1400	1700	2800	3000
	3300	2180	135	6 / 12	1500	1800	1400	1700	2815	3015
	3500	2280	135	6 / 12	1500	1800	1400	1700	2825	3025
	4000	2580	135	6 / 6	1500	1800	1350	1650	2855	3055
	4500	2830	135	6 / 6	1370	1670	1200	1500	2880	3080
	5000	3130	135	3 / 6	1100	1400	1000	1300	2905	3105

Mast type	Maximum Fork Height (MFH)	Mast Overall Lowered Height (OAL)	Freee Lift with Load Backrest*	Mast Tilt Angle (F/B)	Rated Load Capacity				Total Weight with Standard Forks	
					With Standard Forks		With Sideshifter			
					CPCD15	CPCD18	CPCD15	CPCD18	CPCD15	CPCD18
	mm	mm	mm	degree	kg @ (500mm LC)		kg @ (500mm LC)		Kg	
Full Free 2-Stage	3000	2030	1095	6 / 12	1500	1800	1400	1700	2830	3030

Mast type	Maximum Fork Height (MFH)	Mast Overall Lowered Height (OAL)	Freee Lift with Load Backrest*	Mast Tilt Angle (F/B)	Rated Load Capacity				Total Weight with Standard Forks	
					With Standard Forks		With Sideshifter			
					CPCD15	CPCD18	CPCD15	CPCD18	CPCD15	CPCD18
	mm	mm	mm	degree	kg @ (500mm LC)		kg @ (500mm LC)		Kg	
Full Free 3-Stage	3600	1730	790	6 / 6	1400	1700	1300	1600	2975	3175
	4500	2030	1095	6 / 6	1300	1600	1200	1500	3050	3250
	4800	2135	1200	6 / 6	1200	1500	1100	1400	3080	3280



**Note:**

Vertical axle stands for load capacity while horizontal axle stands for load center, Load center is the distance counted from the front of the fork. The base point of the standard load is the center point of the cubic with the same 1000mm dimension in length, width and height. The load capacity should be down if mast tilt forward or using non-standard forks of loading goods with extra width. Please realize the different load capacity between different load centers according to load chart.

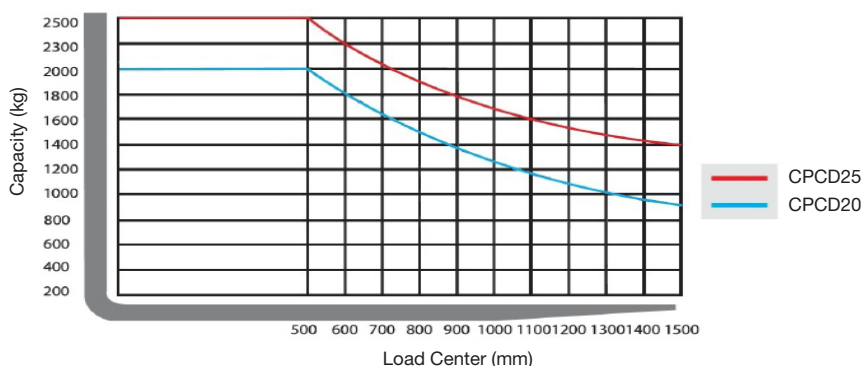


# CAPACITY

Mast type	Maximum Fork Height (MFH)	Mast Overall Lowered Height (OAL)	Free Lift with Load Backrest	Mast Tilt Angle (F/B)	Rated Load Capacity				Total Weight with Standard Forks	
					With Standard Forks		With Sideshifter			
					CPCD20	CPCD25	CPCD20	CPCD25	CPCD20	CPCD25
	mm	mm	mm	degree	kg @ (500mm LC)		kg @ (500mm LC)		Kg	
Standard 2-Stage	3000	2080	120	6 / 12	2000	2500	1850	2350	3295	3495
	3300	2190	120	6 / 12	2000	2500	1850	2350	3315	3510
	3500	2230	120	6 / 12	2000	2500	1850	2350	3330	3530
	4000	2630	120	6 / 6	2000	2500	1750	2300	3440	3640
	4500	2880	120	6 / 6	1920	2420	1650	2150	3545	3745
5000	3130	120	3 / 6	1660	2160	1450	2050	3650	3850	

Mast type	Maximum Fork Height (MFH)	Mast Overall Lowered Height (OAL)	Free Lift with Load Backrest*	Mast Tilt Angle (F/B)	Rated Load Capacity				Total Weight with Standard Forks	
					With Standard Forks		With Sideshifter			
					CPCD20	CPCD25	CPCD20	CPCD25	CPCD20	CPCD25
	mm	mm	mm	degree	kg @ (500mm LC)		kg @ (500mm LC)		Kg	
Full Free 2-Stage	2700	1930	830	6 / 12	2000	2500	1850	2350	3325	3525
	3000	2080	980	6 / 12	2000	2500	1850	2350	3405	3605

Mast type	Maximum Fork Height (MFH)	Mast Overall Lowered Height (OAL)	Free Lift with Load Backrest*	Mast Tilt Angle (F/B)	Rated Load Capacity				Total Weight with Standard Forks	
					With Standard Forks		With Sideshifter			
					CPCD20	CPCD25	CPCD20	CPCD25	CPCD20	CPCD25
	mm	mm	mm	degree	kg @ (500mm LC)		kg @ (500mm LC)		Kg	
Full Free 3-Stage	3600	1820	660	6 / 6	1800	2300	1650	2150	3520	3720
	4000	1950	710	6 / 6	1800	2300	1650	2150	3555	3755
	4300	2050	760	6 / 6	1750	2200	1600	2050	3605	3785
	4500	2120	770	6 / 6	1700	2100	1550	1950	3615	3805
	4700	2190	820	6 / 6	1500	1600	1350	1600	3765	3815
	5000	2290	870	3 / 6	1500	1600	1250	1450	3945	3965



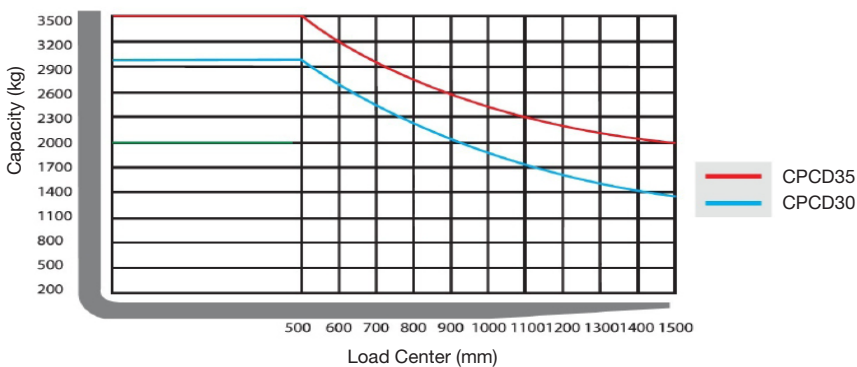
**Note:**  
 Vertical axle stands for load capacity while horizontal axle stands for load center, Load center is the distance counted from the front of the fork. The base point of the standard load is the center point of the cubic with the same 1000mm dimension in length, width and height. The load capacity should be down if mast tilt forward or using non-standard forks of loading goods with extra width. Please realize the different load capacity between different load centers according to load chart.

# CAPACITY

Mast type	Maximum Fork Height (MFH)	Mast Overall Lowered Height (OAL)	Free Lift with Load Backrest	Mast Tilt Angle (F/B)	Rated Load Capacity				Total Weight with Standard Forks	
					With Standard Forks		With Sideshifter			
					CPCD30	CPCD35	CPCD30	CPCD35	CPCD30	CPCD35
	mm	mm	mm	degree	kg @ (500mm LC)		kg @ (500mm LC)		Kg	
Standard 2-Stage	3000	2120	145	6 / 12	3000	3500	2750	3250	4170	4370
	3300	2270	145	6 / 12	3000	3450	2750	3200	4196	4396
	3500	2370	145	6 / 12	2750	3250	2600	3100	4219	4419
	4000	2670	145	6 / 6	2600	3100	2500	3000	4266	4466
	4500	2810	145	6 / 6	2400	2900	2300	2800	4310	4510
	5000	3220	145	3 / 6	2200	2700	2100	2600	4354	4584
	5500	3670	145	3 / 6	2100	2600	2000	2500	4431	4631
6000	4020	145	3 / 6	2000	2500	1900	2400	4476	4706	

Mast type	Maximum Fork Height (MFH)	Mast Overall Lowered Height (OAL)	Free Lift with Load Backrest*	Mast Tilt Angle (F/B)	Rated Load Capacity				Total Weight with Standard Forks	
					With Standard Forks		With Sideshifter			
					CPCD30	CPCD35	CPCD30	CPCD35	CPCD30	CPCD35
	mm	mm	mm	degree	kg @ (500mm LC)		kg @ (500mm LC)		Kg	
Full Free 2-Stage	3000	2120	964	6 / 12	3000	3500	2750	3250	4230	4630
	3500	2370	1214	6 / 12	2750	3250	2600	3100	4279	4679

Mast type	Maximum Fork Height (MFH)	Mast Overall Lowered Height (OAL)	Free Lift with Load Backrest*	Mast Tilt Angle (F/B)	Rated Load Capacity				Total Weight with Standard Forks	
					With Standard Forks		With Sideshifter			
					CPCD30	CPCD35	CPCD30	CPCD35	CPCD30	CPCD35
	mm	mm	mm	degree	kg @ (500mm LC)		kg @ (500mm LC)		Kg	
Full Free 3-Stage	3600	1815	659	6 / 6	2650	3150	2450	2950	4365	4565
	4000	1950	794	6 / 6	2450	2950	2250	2750	4400	4600
	4500	2120	964	6 / 6	2250	2750	2050	2550	4440	4640
	4700	2190	1034	6 / 6	2100	2600	1950	2350	4460	4660
	5000	2295	1134	3 / 6	1900	2400	1600	2100	4510	4710
	5500	2450	1304	3 / 6	1700	2200	1450	1950	4600	4800
	6000	2630	1474	3 / 6	1500	2000	1300	1800	4650	4850
7000	3465	2245	3 / 3	-	1100	-	950	-	5250	



**Note:**

Vertical axle stands for load capacity while horizontal axle stands for load center, Load center is the distance counted from the front of the fork,.The base point of the standard load is the center point of the cubic with the same 1000mm dimension in length, width and height. The load capacity should be down if mast tilt forward or using non-standard forks of loading goods with extra width. Please realize the different load capacity between different load centers according to load chart.

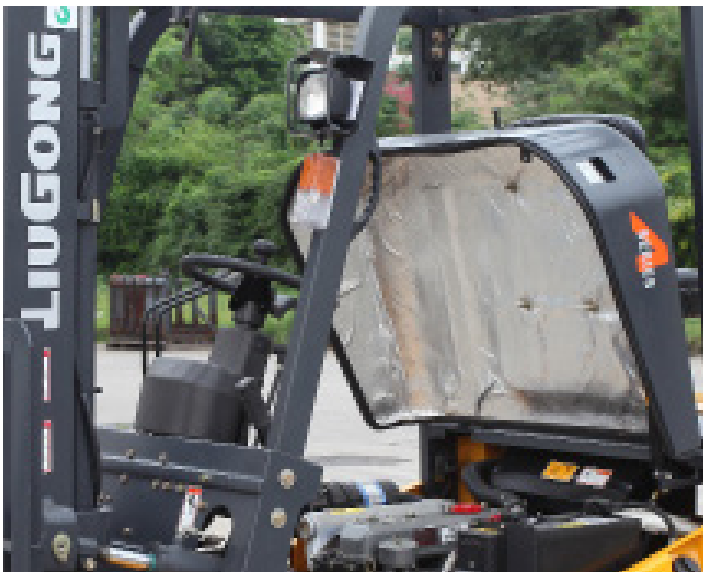
# WE MAKE IT EASY FOR YOU



**EASY TO OWN**



**EASY TO CONTROL**



**EASY TO SERVICE**



**EASY TO MAINTAIN**

# STANDARD CONFIGURATION

## POWER SYSTEM

- GCT GK21 LPG/GAS dual fuel engine (CPCD15-18)
- GCT GK25 LPG/GAS dual fuel engine (CPCD20-35)
- One-speed automatic transmission
- High strength drive axle
- Heavy duty steering axle
- Air filter with dual-elements
- Fuel system pre-filter
- Radiator
- Middle exhaust

## HYDRAULIC SYSTEM

- 2-funtion hydraulic valve
- Hydrostatic steering
- Oil filter for intake and return
- Hydraulic oil radiator (CPCD30-35 only)

## ELECTRIC SYSTEM

- 1 batteries
- Front flood lights
- Front steering lights
- Rear combination lights
- Buzzer for back off

## UNDERCARRIAGE

- High strength frame
- 1 piece counterweight
- Tow pin
- Air filled pneumatic drive tires
- Air filled pneumatic steer tires

## MAST

- 3.0M Standard 2-stage mast
- 970mm Wide Class II carriage (CPCD15-18)
- 1040mm Wide Class II carriage (CPCD20-25)
- 1100mm Wide Class III carriage (CPCD30-35)
- Load backrest
- 920mm long Class II pallet forks (CPCD15-18)
- 1070mm long Class II pallet forks (CPCD20-25)
- 1070mm long Class III pallet forks (CPCD30-35)

## OPERATOR STATION

- Overhead guard
- Locks for engine hood
- Vinyl cushion seat with seat belt
- Ignition lock
- Display with alarms, fuel rate, water temperature, working hour
- Tilt steering column
- Inching, brake and accelerator pedals
- Hand parking
- Floor mat

# OPTIONAL CONFIGURATION

## POWER SYSTEM

- Xinchai 4D27LPG single fuel engine (CPCD20-35)
- Elevated air pre-cleaner
- 2nd refined air filter
- Middle exhaust
- Vertical exhaust

## HYDRAULIC SYSTEM

- 3-funtion hydraulic valve
- 4-funtion hydraulic valve

## ELECTRIC SYSTEM

- Rear working light
- Amber warning light
- License plate light

## UNDERCARRIAGE

- Solid pneumatic drive tires
- Solid pneumatic steer tires

## MAST

- Full free 2-stage mast
- Full free 3-stage mast
- Longer Class II or III pallet forks

## OPERATION STATION

- Enclosed cabin
- Heater for cabin
- Operator fan
- Cup holder
- Fire extinguisher
- Expansion tank
- Anti-corrosion lifting and tilting cylinde
- Protective cover for tilt cylinde
- Oil-water separator (for Xinchai engine only)
- Master key
- Hydraulic electronic shifting
- Electronic of power off (for Xinchai engine only)
- Half-suspension vinyl seat(tiancheng)
- Grammer full-suspension vinyl seat